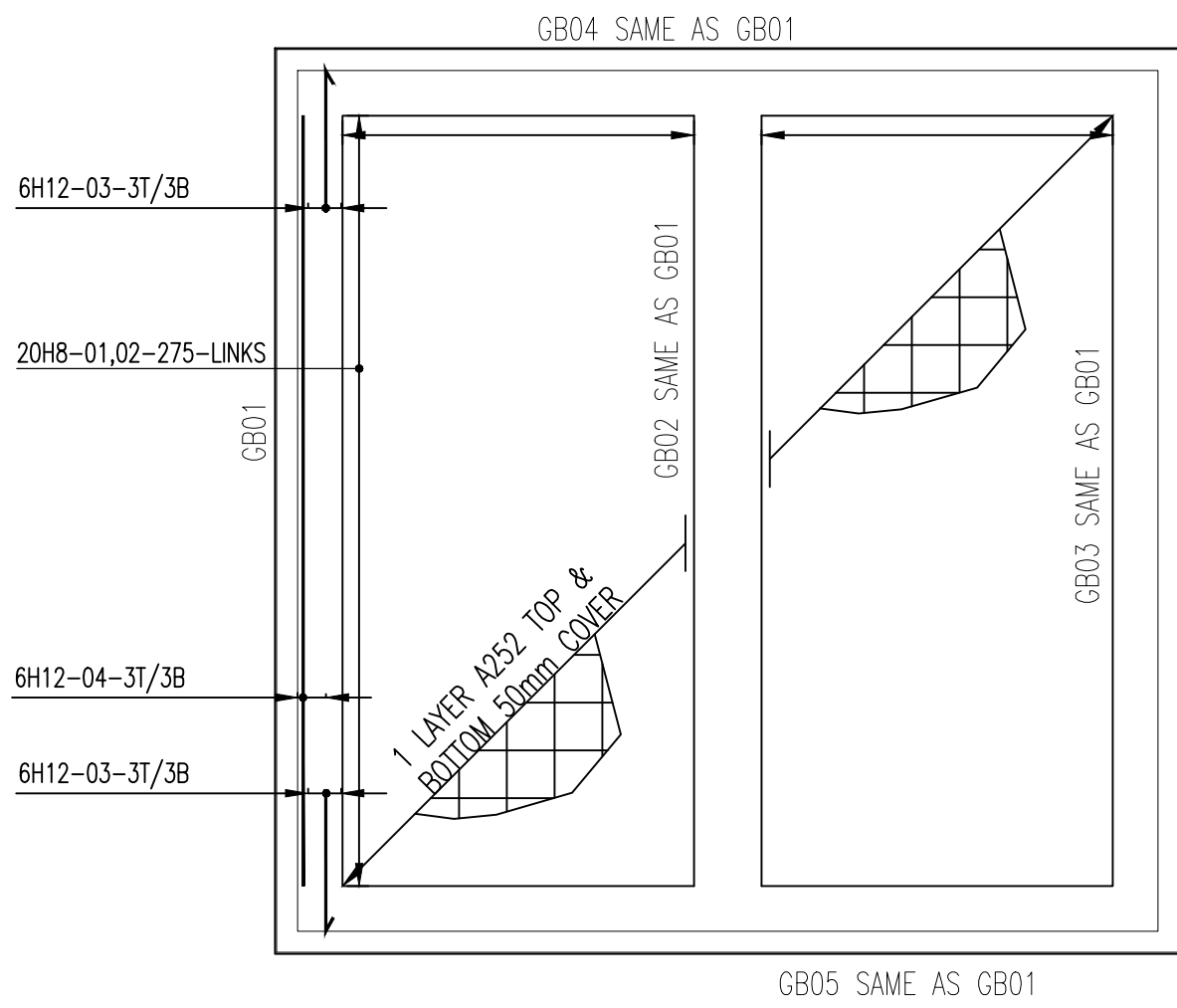


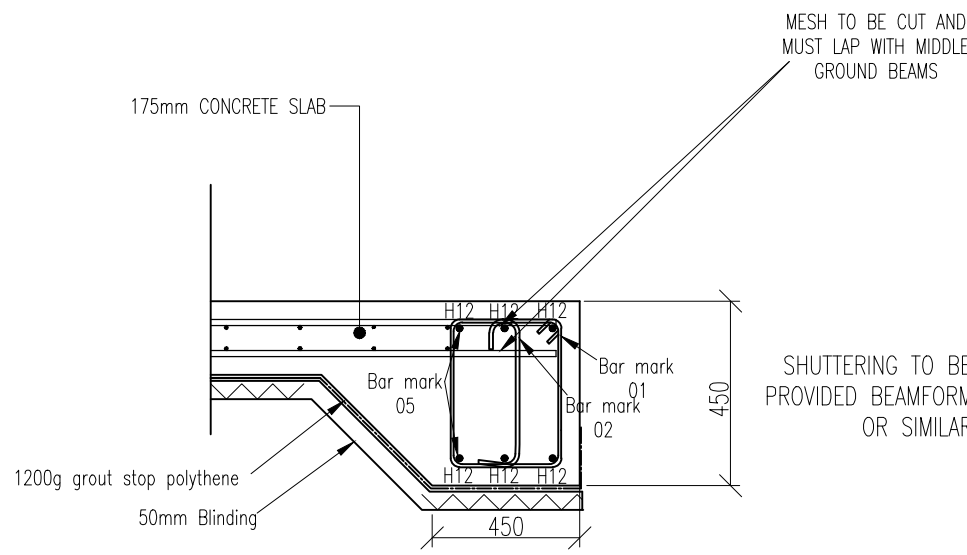
GARAGE PLAN
SCALE 1:50



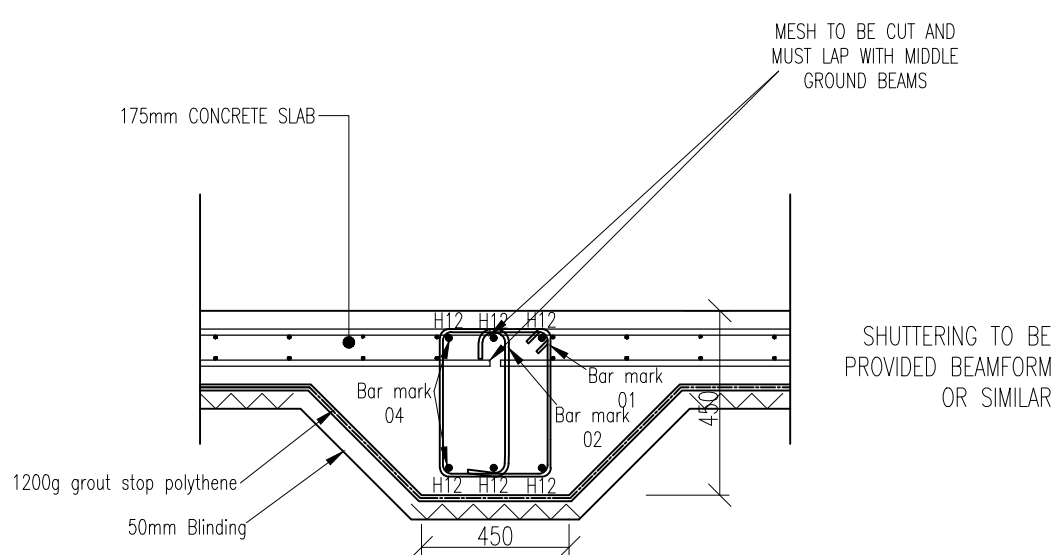
GARAGE PLAN

SPECIFICATION NOTES

- DO NOT SCALE THESE SKETCHES.
- ALL DIMENSIONS ARE IN MM UNLESS NOTED OTHERWISE.
- THE CONTRACTOR SHALL BE RESPONSIBLE FOR CONFIRMING DIMENSIONS AND LEVELS ON SITE , IN CONJUNCTION WITH THE ARCHITECTS DRAWINGS, PRIOR TO THE COMMENCEMENT OF CONSTRUCTION OR FABRICATION.
- THE CONTRACTOR SHALL BE RESPONSIBLE FOR SETTING OUT THE PROJECT ON SITE.
- FOR DETAILS OF EXISTING AND PROPOSED SITE LEVELS SEE THE ARCHITECTS DRAWINGS.
- ALL FOUNDATION WORKS ARE TO BE IN ACCORDANCE WITH BS8004:1986 AND BS8000:PART 1:1989.
- THIS DRAWING MUST BE READ IN CONJUNCTION WITH THE SITE INVESTIGATION REPORT.
- ALL VEGETABLE MATTER, TOPSOIL AND FILL MATERIAL IS TO BE REMOVED FROM BENEATH THE AREA OF THE BUILDING.
- ALL EXCAVATIONS ARE TO BE KEPT FREE FROM GROUND AND SURFACE WATER RUN OFF AT ALL TIMES. NO CONCRETE, FOUNDATION ELEMENTS, SUB-BASE OR STRUCTURAL SLABS ARE TO BE PLACED INTO OR AGAINST SUB-GRADES CONTAINING ICE OR SUB-GRADE BEFORE AND AFTER PLACING OF SUB-BASE OR CONCRETE AND UNTIL SUCH SUB-GRADES ARE FULLY PROTECTED BY THE PERMANENT STRUCTURE. SHOULD WATER, ICE OR FROST ENTER THE EXCAVATIONS ALL SUCH AFFECTED MATERIAL IS TO BE REMOVED.
- THE FORMATION IS TO BE BLINDED WITH A MINIMUM OF 50mm C20 BLINDING CONCRETE IMMEDIATELY AFTER EXCAVATION TO PREVENT WEATHERING OF THE FORMATION.
- ALL CONCRETE WORK IS TO BE IN ACCORDANCE WITH BS8110:PART 1:1997, BS5328:1997 AND BS8000:PART 2:1990.
- SPECIFICATION FOR FOUNDATION CONCRETE:
TYPE C35 DESIGNED MIX
NOMINAL MAXIMUM AGGREGATE SIZE 20mm
AGGREGATE TYPE BS5882
SULPHATE CLASS CLASS 1
CEMENT TYPE PC TO BS12
MINIMUM CEMENT CONTENT 300kg/m³
MAXIMUM FREE WATER / CEMENT RATIO 0.60
- SPECIFICATION FOR BLINDING CONCRETE:
TYPE C20 DESIGNED MIX
NOMINAL MAXIMUM AGGREGATE SIZE 20mm
AGGREGATE TYPE BS5882
SULPHATE CLASS CLASS 1
CEMENT TYPE PC TO BS12
MINIMUM CEMENT CONTENT 220kg/m³
MAXIMUM FREE WATER / CEMENT RATIO 0.60
- ALL CONCRETE IS TO BE OBTAINED FROM AN APPROVED READY MIX CONCRETE SUPPLIER WHO IS TO MEET THE REQUIREMENTS OF THE NATIONAL ACCREDITATION COUNCIL FOR CERTIFICATION BODIES CATEGORY 2. CERTIFICATES OF CONCRETE MIX DESIGN ARE TO BE SUBMITTED TO THE ENGINEERS PRIOR TO COMMENCEMENT OF THE WORKS. THE PRODUCER IS TO WORK IN ACCORDANCE WITH THE LATEST RECOMMENDATIONS REGARDING ALKALI-SILICA REACTION.
- ALL CONCRETE IS TO BE MECHANICALLY VIBRATED.
- MINIMUM CONCRETE COVER TO REINFORCEMENT IS TO BE 40mm UNLESS NOTED OTHERWISE. PROPRIETARY CONCRETE COVER BLOCKS AND STEEL CHAIRS ARE TO BE USED.
- HIGH YIELD REINFORCEMENT (H) IS TO BE GRADE 460 MATERIAL, DEFORMED TYPE 2 , IN ACCORDANCE WITH BS4449:1997.
- THE POSITION OF ANY CONSTRUCTION JOINTS IS TO BE AGREED WITH THE ENGINEERS. JOINTS ARE TO BE FORMED AND PREPARED IN ACCORDANCE WITH CLAUSE 6.2.9 OF BS8110:PART 1:1997 AND CLAUSE 3.3.1 OF BS8000:PART 2:SECTION 2.2:1990.
- FOR DETAILS, SIZES AND SETTING OUT OF ALL DRAINS, DUCTS, PIPES AND SERVICES SEE THE ARCHITECTS DRAWINGS.
- NO DRAINS, DUCTS OR SERVICES ARE TO PASS THROUGH OR INTERRUPT R.C. FOUNDATIONS.
- ALL LAPS TO MESH TO BE MIN. 400MM AND LAPS TO BAR TO BE MIN. 40 x DIAMETER OF SMALLER BAR.
- ALL DIMENSIONS TO BE CONFIRMED ON SITE PRIOR TO ORDER OR FABRICATION.



TYPICAL SECTION OF GROUND BEAMS
SECTION - NOT TO SCALE



TYPICAL SECTION OF MIDDLE GROUND BEAMS
SECTION - NOT TO SCALE

Rev.	Date	Description	By	Chk
A	24/04/18	Revised raft size	DT	-

Tellett Engineering Consultants
Suite 2
Orchard House
St Neots
Cambs
PE19 1AW
Tel. 01480 570 067
office@t3ec.co.uk



Project	Foundations 65 High Street, Upwood PE26 2QE
Section	Garage Raft Foundation
Drawn: PG	Drawing No.
Date: December 2017	J2873/02
Scale: As shown	